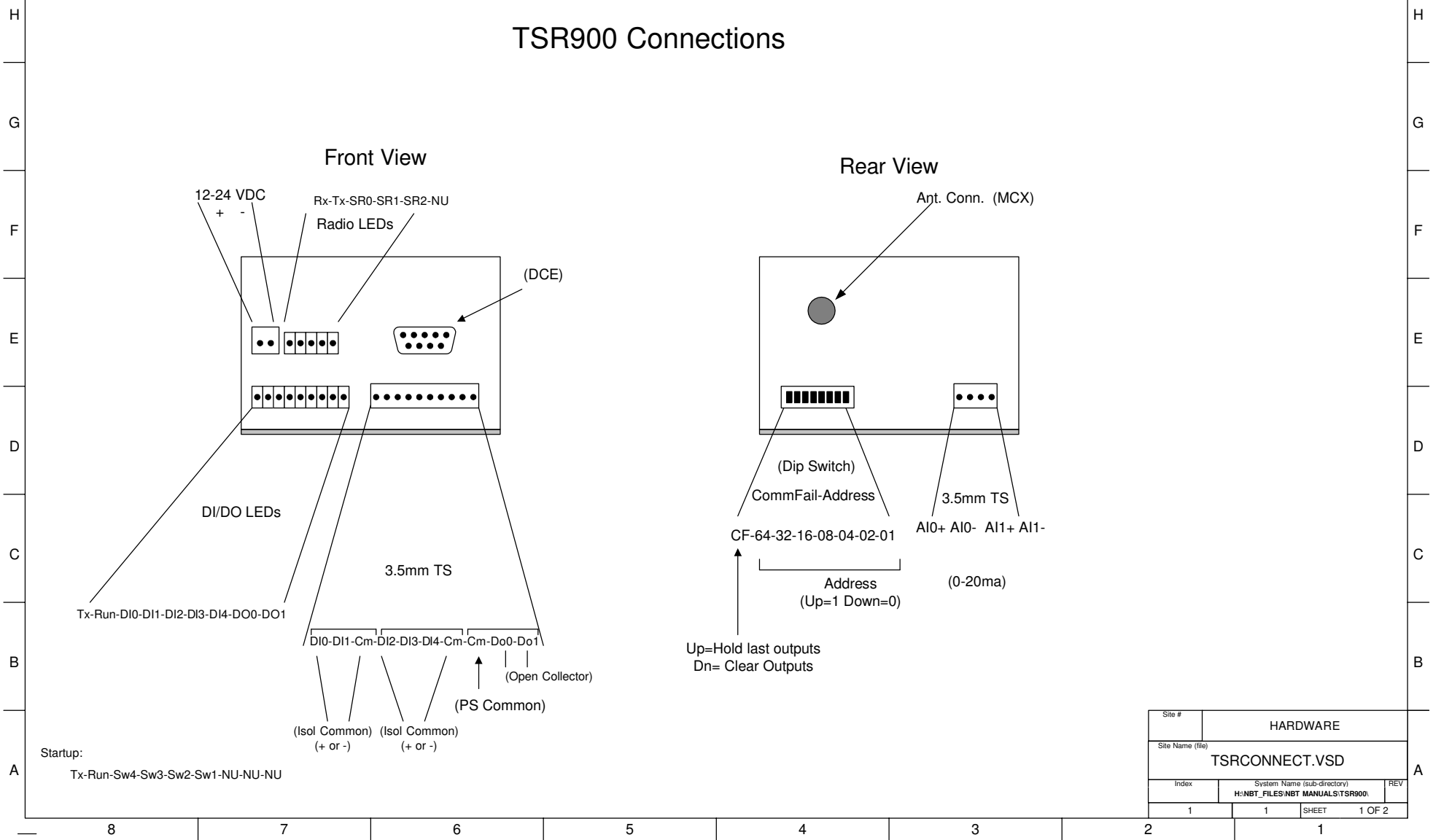


REV.	DESCRIPTION	DATE	BY
1.0	add startup led use	ch	

# TSR900 Connections

Front View

Rear View

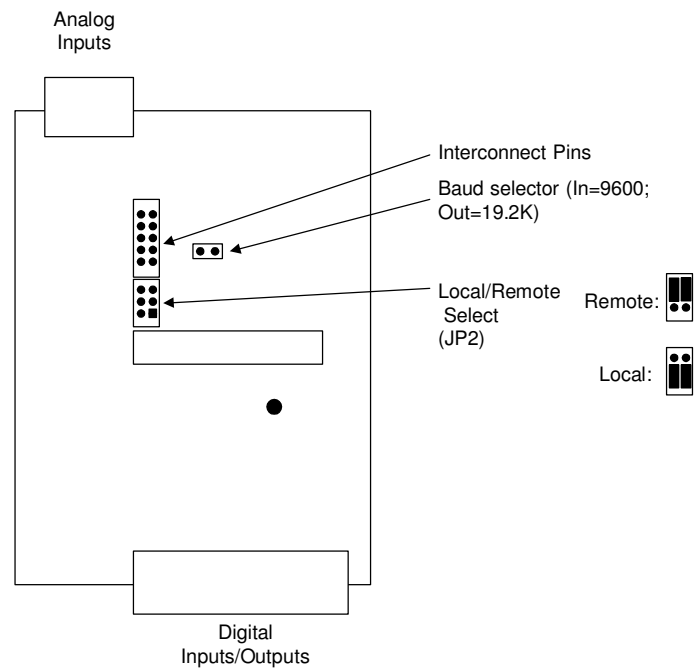


Site #	HARDWARE		
Site Name (file)	TSRCONNECT.VSD		
Index	System Name (sub-directory)	REV	
1	H:\NBT_FILES\NBT_MANUALS\TSR900\	1	1 OF 2
		SHEET	

REV.	DESCRIPTION	DATE	BY

### Internal Options

(Top view)



To open unit:  
 \* Remove end plate.  
 \* Remove phillips screw from bottom.  
 (caution- nylon washer between standoff and board)

### Modbus Register Assignments:

Reg 0	40001-	Digital Inputs (bits 0-4)
	40002-	Analog Input 0 (0-4095)
	40003-	Analog Input 1 (0-4095)
	40004-	Cycles DI0
	40005-	Cycles DI1
	40006-	Cycles DI2
	40007-	Cycles DI3
	40008-	Run Time DI0
	40009-	Run Time DI1
	40010-	Run Time DI2
	40011-	Run Time DI3
	40012-	Max Val of AI0
	40013-	Min Val of AI0
Reg 13	40014-	Dig Outputs (bits 0,1)

Site #	PAGE-2		
Site Name (file)	TSRCONNECT.VSD		
Index	System Name (sub-directory)	REV	
1	H:\NBT_FILES\NBT_MANUALS\TSR900		
	1	SHEET	2 OF 2