

◆ Product Data ◆

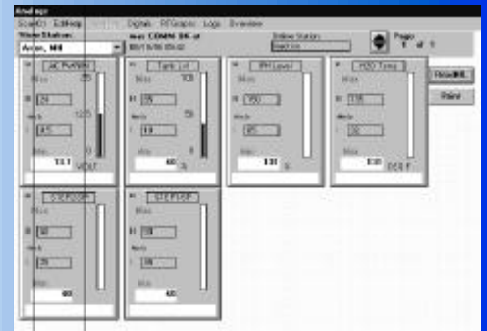
for supervisory control and Data Acquisition



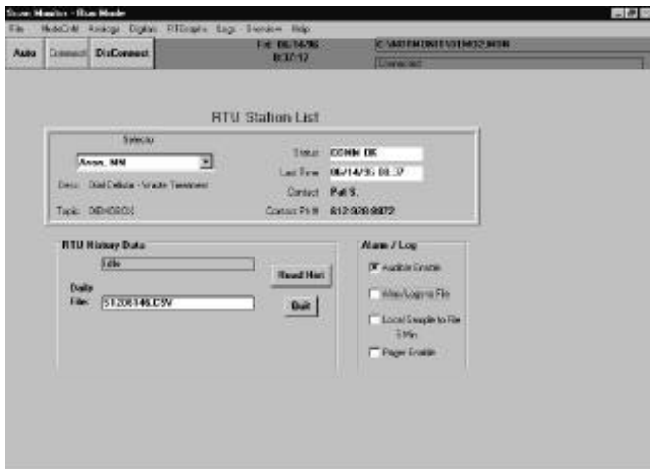
Real Time Monitor MMI

The Real Time Monitor is a powerful, flexible data acquisition and control software package designed to run in the Microsoft Windows environment. The Monitor is ideal for any cost sensitive system since the configuration is automated, it has point capabilities unmatched by competitors and the included DDE server can be used for future upgrading to another package. We believe that countless operators want the benefits of a PC software solution but are priced out of the market. NBT changes that offering a full featured, easy to use, open architecture package at an affordable price.

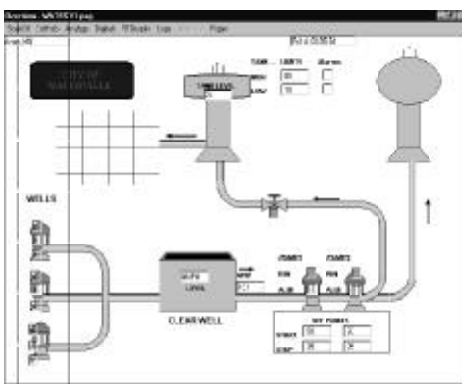
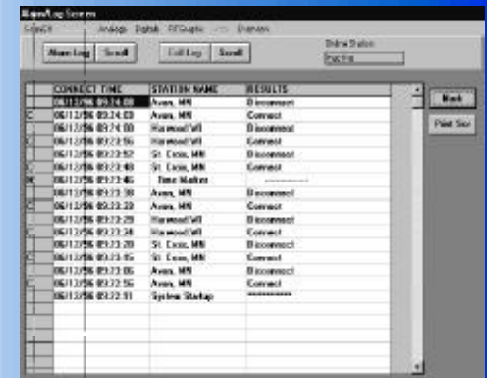
Real time analog displays



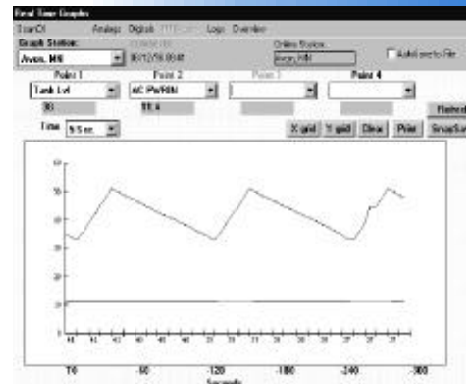
Real time digital status, runtimes and cycles



Call and alarm time stamped logs (Right)
Control screen for your communications (Left)



Display graphics of your system or site (Left)



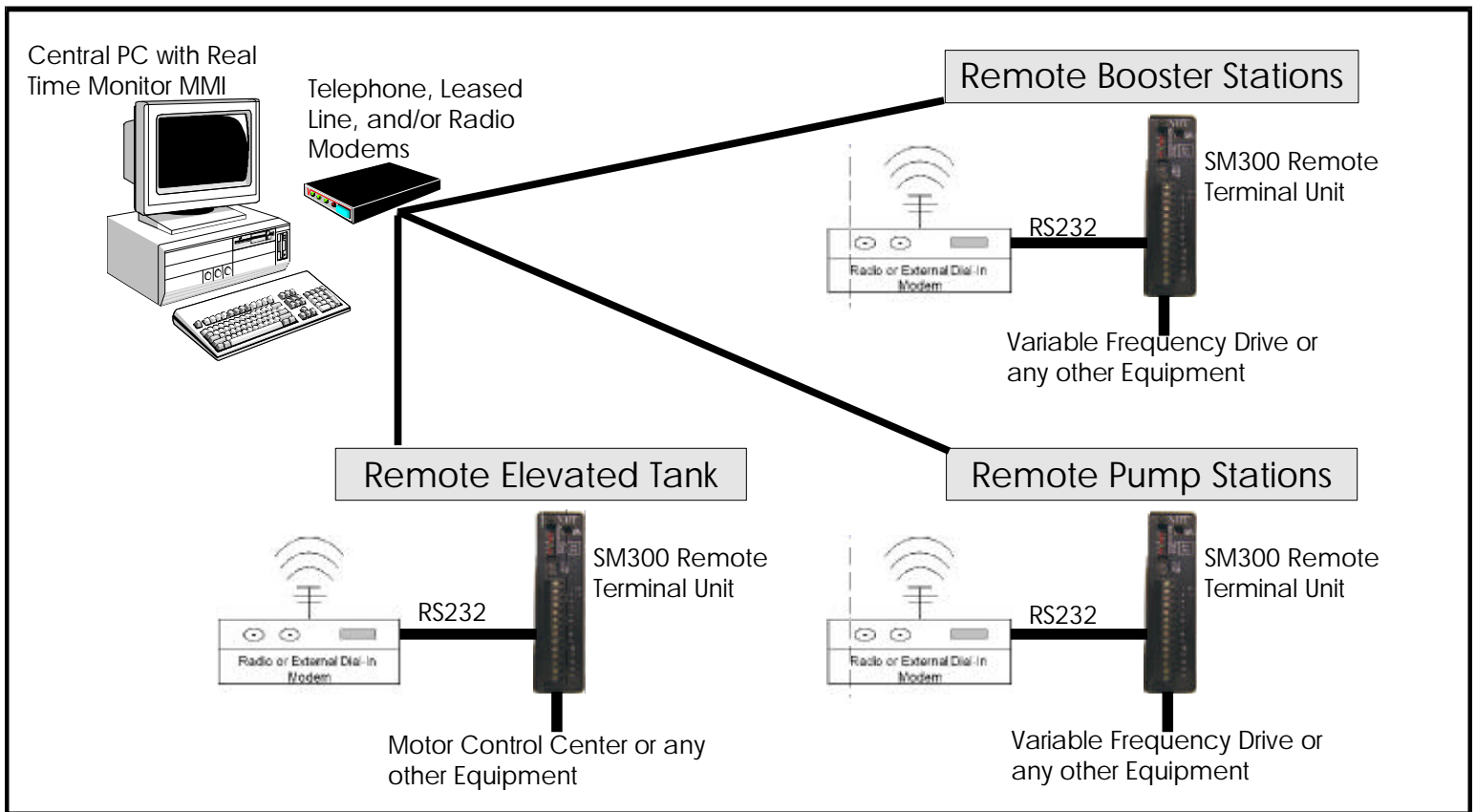
Real time graphing up to 4 points



Nota Bene Technology, Inc.
A Div. of EPG Companies Inc.
1990 County Rd. 81
Maple Grove, MN 55311
(952) 928-8872 (800) 892-5303
(952) 928-8874 FAX www.nbtinc.com

- # FEATURES
- Up to 4,800 tags (40 station with 120 I/O points per station)
 - Open connectivity provides gateway to third party systems
 - Automatic configuration, program read in from RTU
 - Direct historical and real time data transfer into ACCESS, tab delimited, or comma separated file formats
 - Diagnostic alarming at your local PC and/or direct to alphanumeric pager
 - Object oriented design of graphical displays allows each workstation to be customized for the user
 - User-programmable logic/calculation functions can be custom to each workstation
 - Runtime security with password protection
 - Dynamic Data Exchange (DDE) I/O server included

Water Treatment System



- # APPLICATIONS
- Man Machine Interface (MMI)
 - Tank Monitoring and Alarming
 - Lift Station Monitoring
 - Water and Waste Treatment Automation
 - Radio Tower Monitoring
 - Pipeline Monitoring and Alarming
 - Energy Management
 - Supervisory Control and Data Accusation (SCADA)
 - Small-scale Factory Automation
 - Laboratory Automation

